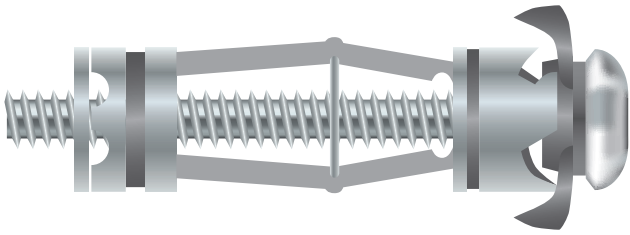


HOLLOW WALL ANCHORS

Product Code: HW0100100010 to HW0100100100
Carbon Steel - White Zinc Plated

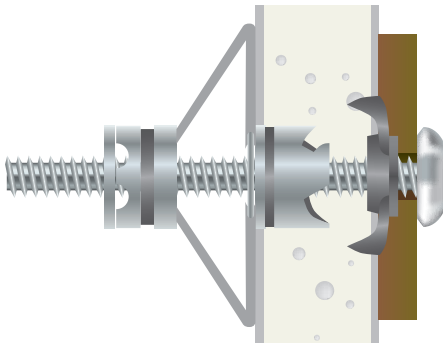


BASE MATERIAL



APPLICATIONS

- Pictures
- Lighting
- Cable Conduit to Drywall
- Shelves
- Wood strips



PRODUCT DESCRIPTION

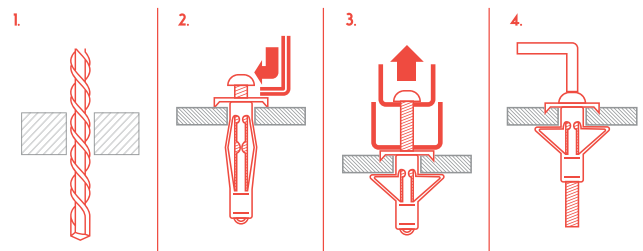
The NEXUS Hollow Wall Anchor is an expandable Metal fixing consisting of a Machine Screw that's threaded into a slotted sleeve. As the screw is tightened the sleeve expands outward and then collapses tightly against the back of the wall. The screw can be removed and replaced as often as required

- Anti-Rotational Lock
- Fast and easy installation and removal
- Non-flammable fixing

INSTALLATION SPECIFICATIONS

DIMENSIONS	ANCHOR DIAMETER		
	1/8"	3/16"	1/4"
ANSI DRILL BIT SIZE (IN)	5/16	3/8	7/16
COLLAR DIAMETER (IN)	1/2	5/8	11/16
BODY DIAMETER (IN)	17/64	3/8	7/16
THREAD SIZE (UNC)	6 - 32	10-24	1/4 - 20

INSTALLATION DRAWINGS



1. Drill hole through base material.
2. Insert the Hollow Wall Anchor into the hole until the metal prongs sink into the base material.
3. For faster setting using the Hollow Wall Anchor setting tool. Unscrew screw head 2 to 3 turns and slide setting tool underneath, then squeeze setting tool to expand the anchor.
4. Complete the installation by removing the screw lining up the fixture, re-insert the screw and tighten.

PERFORMANCE DATA

Ultimate load capacities for the NEXUS Hollow Wall Anchor in Plasterboard

PRODUCT	3/8" PLASTERBOARD		1/2" PLASTERBOARD		5/8" PLASTERBOARD		3/4" PLASTERBOARD	
	ULTIMATE LOADS		ULTIMATE LOADS		ULTIMATE LOADS		ULTIMATE LOADS	
	TENSION LBS (KN)	SHEAR LBS (KN)	TENSION LBS (KN)	SHEAR LBS (KN)	TENSION LBS (KN)	SHEAR LBS (KN)	TENSION LBS (KN)	SHEAR LBS (KN)
1/8 (3.2)	80 (0.4)	110 (0.5)	150 (0.7)	170 (0.8)	160 (0.7)	195 (0.9)	170 (0.8)	210 (0.9)
3/16 (4.8)	90 (0.4)	130 (0.6)	175 (0.8)	180 (0.8)	190 (0.9)	210 (0.9)	210 (0.9)	220 (1.0)
1/4 (6.4)	95 (0.4)	150 (0.7)	200 (0.9)	200 (0.9)	220 (1.0)	220 (1.0)	245 (1.1)	250 (1.1)

Ultimate loads are the maximum performance and for a reference only. A safety factor must be applied of 4.0 or greater to determine the recommended load.

Recommended load capacities for the NEXUS Hollow Wall Anchors in Plasterboard

PRODUCT	3/8" PLASTERBOARD		1/2" PLASTERBOARD		5/8" PLASTERBOARD		3/4" PLASTERBOARD	
	ULTIMATE LOADS		ULTIMATE LOADS		ULTIMATE LOADS		ULTIMATE LOADS	
	TENSION LBS (KN)	SHEAR LBS (KN)	TENSION LBS (KN)	SHEAR LBS (KN)	TENSION LBS (KN)	SHEAR LBS (KN)	TENSION LBS (KN)	SHEAR LBS (KN)
1/8 (3.2)	20 (0.1)	30 (0.1)	40 (0.2)	45 (0.2)	40 (0.2)	50 (0.2)	45 (0.2)	55 (0.2)
3/16 (4.8)	25 (0.1)	35 (0.2)	45 (0.2)	45 (0.2)	50 (0.2)	55 (0.2)	55 (0.2)	55 (0.2)
1/4 (6.4)	25 (0.1)	40 (0.2)	50 (0.2)	50 (0.2)	55 (0.2)	55 (0.2)	60 (0.3)	65 (0.3)

Recommended load figures above have a safety factor of 4.0 applied.

Ultimate load capacities for the NEXUS Hollow Wall Anchor in Plywood

PRODUCT	1/8" PLYWOOD		1/4" PLYWOOD		3/8" PLYWOOD		1/2" PLYWOOD		5/8" PLYWOOD	
	ULTIMATE LOADS		ULTIMATE LOADS		ULTIMATE LOADS		ULTIMATE LOADS		ULTIMATE LOADS	
	TENSION LBS (KN)	SHEAR LBS (KN)	TENSION LBS (KN)	SHEAR LBS (KN)	TENSION LBS (KN)	SHEAR LBS (KN)	TENSION LBS (KN)	SHEAR LBS (KN)	TENSION LBS (KN)	SHEAR LBS (KN)
1/8 (3.2)	110 (0.5)	100 (0.5)	125 (0.6)	450 (2.0)	200 (0.9)	450 (2.0)	300 (1.4)	450 (2.0)	420 (1.9)	450 (2.0)
3/16 (4.8)					320 (1.4)	580 (2.6)	420 (1.9)	610 (2.7)	500 (2.3)	640 (2.9)
1/4 (6.4)					400 (1.8)	720 (3.2)	480 (2.2)	830 (3.7)	560 (2.5)	900 (4.1)




Recommended load figures above have a safety factor of 4.0 applied.

Recommended load capacities for the NEXUS Hollow Wall Anchors in Plywood

PRODUCT	1/8" PLYWOOD		1/4" PLYWOOD		3/8" PLYWOOD		1/2" PLYWOOD		5/8" PLYWOOD	
	ULTIMATE LOADS		ULTIMATE LOADS		ULTIMATE LOADS		ULTIMATE LOADS		ULTIMATE LOADS	
	TENSION LBS (KN)	SHEAR LBS (KN)	TENSION LBS (KN)	SHEAR LBS (KN)	TENSION LBS (KN)	SHEAR LBS (KN)	TENSION LBS (KN)	SHEAR LBS (KN)	TENSION LBS (KN)	SHEAR LBS (KN)
1/8 (3.2)	30 (0.1)	25 (0.1)	30 (0.1)	115 (0.5)	50 (0.2)	115 (0.5)	75 (0.3)	115 (0.5)	105 (0.5)	115 (0.5)
3/16 (4.8)					80 (0.4)	145 (0.7)	105 (0.5)	155 (0.7)	125 (0.6)	160 (0.7)
1/4 (6.4)					100 (0.5)	180 (0.8)	120 (0.5)	210 (0.9)	140 (0.6)	225 (1.0)

Recommended load figures above have a safety factor of 4.0 applied.

ORDERING INFORMATION

PRODUCT REFERENCE	ANCHOR DIAMETER 	SCREW LENGTH 	THREAD SIZE (UNC) 	DRILL DIAMETER 	WALL THICKNESS 	BOX PACKING 	CARTON PACKING 
HW0100100010	1/8 XS	1 1/16	6-32	5/16	1/8 to 1/4	100	500
HW0100100020	1/8 S	1 3/4	6-32	5/16	3/8 to 1/2	100	500
HW0100100030	1/8 L	2 1/4	6-32	5/16	5/8 to 1	100	500
HW0100100040	1/8 XL	2 11/16	6-32	5/16	1 1/4 to 1 1/2	50	250
HW0100100050	3/16 S	2	10-24	3/8	3/8 to 5/8	50	250
HW0100100060	3/16 L	2 1/2	10-24	3/8	3/4 to 1 1/8	50	250
HW0100100070	3/16 XL	3	10-24	3/8	1 1/4 to 1 3/4	25	125
HW0100100080	1/4 S	2 1/4	1/4-20	7/16	3/8 to 1/2	50	250
HW0100100090	1/4 L	2 3/4	1/4-20	7/16	5/8 to 1 1/8	50	250
HW0100100100	1/4 XL	3 3/8	1/4-20	7/16	1 1/4 to 1 3/4	25	125

HOLLOW WALL SETTING TOOL

PRODUCT REFERENCE	DESCRIPTION	BOX PACKING 	CARTON PACKING 
HW0100200010	Setting Tool for all sizes of Hollow Wall Anchors	1	1

