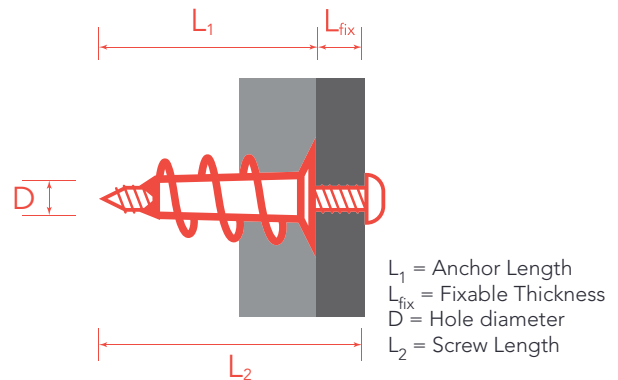
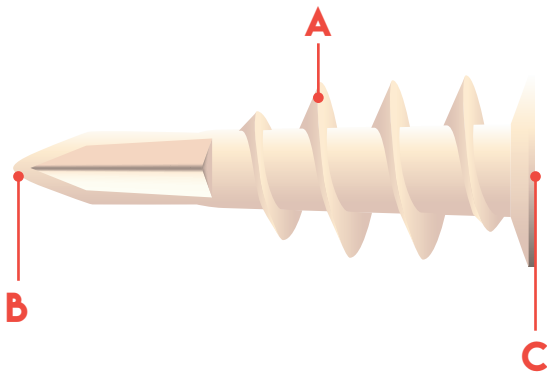


NYLON PLASTERBOARD ANCHORS

Product Code: NP010010001 to 40
Engineered Nylon

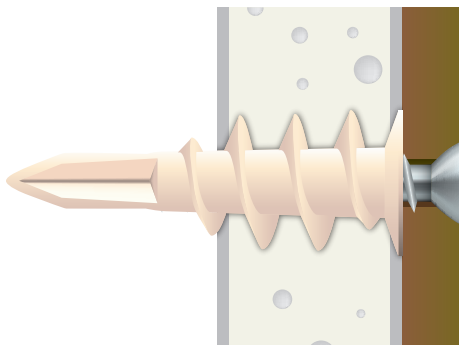


BASE MATERIAL



APPLICATIONS

- Electrical fixtures
- Shelving
- Telephone systems
- Curtain Poles
- Plumbing
- Interior finishing
- Miscellaneous hardware



PRODUCT DESCRIPTION

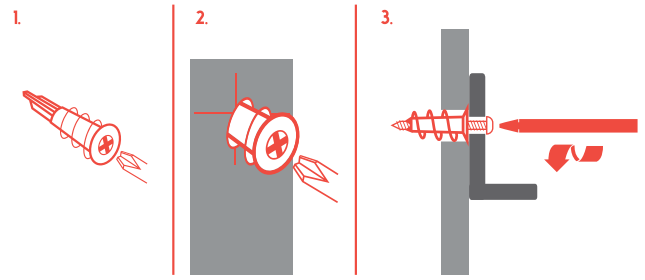
NEXUS Nylon self drilling anchor is suited for applications on aerated concrete supports (gasbeton) and Plasterboard. Similar to the NEXUS Zinc self drilling anchor, it permits fast and easy installations. It can be screwed directly into the support without drilling.

- Wide self milling propeller permit the easy inserting of the anchor in the hole (A).
- The self drilling part. A light penetrating pressure is all that is required to drive the anchor into the base material due to the 3 point configuration (B).
- Thanks to the deep etching it is possible to use screwdrivers with a straight blade and Pozidrive No.2 cutting edge C
- Maximum adaptability, can be used with wood or chipboard screws.

INSTALLATION SPECIFICATIONS

DIMENSIONS	NYLON ANCHOR	NYLON ANCHOR - MINI
COLLAR (SIZE)	9/16	15/32
SCREW RANGE (UNC)	No.6 to No.8	No.6 to No.8
THREAD LENGTH (IN)	15/16	47/64
POINT LENGTH (IN)	3/4	37/64
ANCHOR LENGTH (IN)	1 - 11/16	1 - 5/16
MIN.SCREW ENGAGEMENT (IN)	3/4	3/4

INSTALLATION DRAWINGS



1. Insert screwdriver into anchor
2. Push the anchor into the base material until the 3 pointed tip penetrates fully. Using min forward pressure, rotate the anchor with the screwdriver until the collar is flush with the base material.
3. Place fixture in the correct position and insert the screw, tighten until it feels secure.

PERFORMANCE DATA

Ultimate and recommended load capacities of the NEXUS Plasterboard Anchor 1.2.

PRODUCT	3/8" PLASTERBOARD				1/2" PLASTERBOARD				5/8" PLASTERBOARD				3/4" PLASTERBOARD			
	ULTIMATE LOADS		RECOMMENDED LOADS		ULTIMATE LOADS		RECOMMENDED LOADS		ULTIMATE LOADS		RECOMMENDED LOADS		ULTIMATE LOADS		RECOMMENDED LOADS	
	TENSION LBS (KN)	SHEAR LBS (KN)	TENSION LBS (KN)	SHEAR LBS (KN)	TENSION LBS (KN)	SHEAR LBS (KN)	TENSION LBS (KN)	SHEAR LBS (KN)	TENSION LBS (KN)	SHEAR LBS (KN)	TENSION LBS (KN)	SHEAR LBS (KN)	TENSION LBS (KN)	SHEAR LBS (KN)	TENSION LBS (KN)	SHEAR LBS (KN)
METAL/ NYLON - STD	50 (0.2)	60 (0.3)	15 (0.1)	15 (0.1)	65 (0.2)	70 (0.2)	15 (0.1)	20 (0.1)	80 (0.3)	100 (0.3)	20 (0.1)	25 (0.1)	85 (0.3)	100 (0.4)	20 (0.1)	25 (0.1)
METAL/ NYLON - MINI	45 (0.2)	50 (0.2)	10 (0.0)	15 (0.1)	55 (0.2)	55 (0.2)	15 (0.1)	15 (0.1)	70 (0.3)	70 (0.3)	20 (0.1)	20 (0.1)	75 (0.3)	80 (0.4)	20 (0.1)	20 (0.1)

Ultimate loads are the maximum performance and for a reference only. A safety factor must be applied of 4.0 or greater to determine the recommended load. These figures do not apply to overhead applications or where holding values are critical.

ORDERING INFORMATION

PRODUCT REFERENCE	ANCHOR LENGTH	COLLAR SIZE	THREAD LENGTH	SCREW SIZE RANGE (NO.)	SCREWS SIZE	BOX PACKING	CARTON PACKING
ZP0100100010	1 11/16	9/16	15/16	6,8	no screws	100	1000
ZP0100100020	1 11/16	9/16	15/16	6,8	8 x 1"	100	1000
Mini							
NP0100100030	1-5/16	15/32	47/64	6,8	no screws	100	1000
NP0100100040	1-5/16	15/32	47/64	6,8	6 x 1"	100	1000