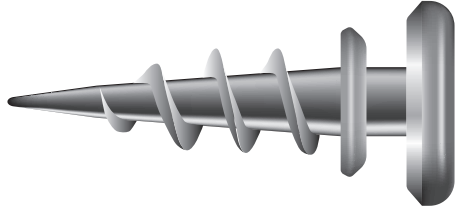


# METAL PICTURE HOOKS

Product Code: MP0100100010/20  
Zamac Alloy

---

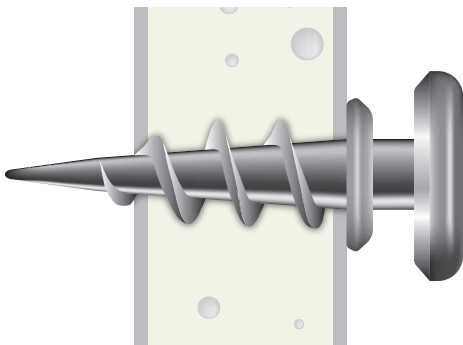


## BASE MATERIAL



## APPLICATIONS

- Picture Frames
- Mirrors



## PRODUCT DESCRIPTION

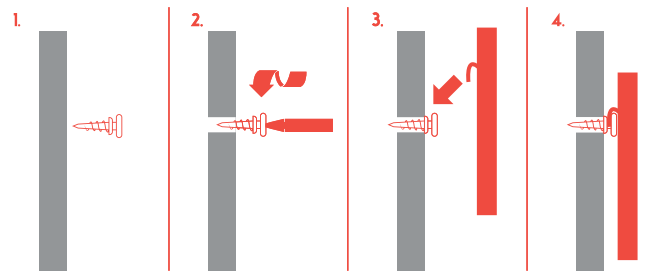
The NEXUS Metal Picture Hook is designed to hang pictures, mirrors and othe wall décor into Plasterboard without the need to Pre-Drill. It works in all sizes of drywall without the fear of puncturing wiring or plumbing pipes. Its versatility means it can be used in conjunction with various hanging hardware such as picture wire, sawtooth hooks, D-Rings and keyhole hangers.

- No requirement for pre-drilling
- Supports up to 30 lbs
- Works with both Phillips and Flathead scrwdrivers

## INSTALLATION SPECIFICATIONS

DIMENSIONS	METAL ANCHOR
COLLAR DIA (SIZE)	0.3625"
COLLAR THICKNESS (SIZE)	0.1130"
THREAD LENGTH (IN)	0.8075"
POINT LENGTH (IN)	0.1970"
ANCHOR LENGTH (IN)	1.0990"

## INSTALLATION DRAWINGS



1. Select positioning on drywall/plasterboard.
2. Using either a Phillips or Flatheaded screwdriver, screw the anchor through the base material.
3. If fixture is too big to be held with one fixing, use a 2nd fixing but make sure it is lined up accurately, horizontally with the 1st.
4. Hang fixture onto fixing.

## PERFORMANCE DATA

Ultimate and recommended load capacities of the NEXUS Metal Picture Hook

PRODUCT	PLASTERBOARD			
	ULTIMATE LOADS		RECOMMENDED LOADS	
	TENSION LBS (kN)	SHEAR LBS (kN)	TENSION LBS (kN)	SHEAR LBS (kN)
METAL	30 (0.1)	30 (0.1)	15 (0.1)	15 (0.1)

## ORDERING INFORMATION

PRODUCT REFERENCE	ANCHOR DIAMETER	ANCHOR LENGTH	HEAD DIAMETER	PHILLIPS DRIVER	HEAD FINISH	BOX PACKING	CARTON PACKING
ZP0100100010							
		1 2/16	8/16	#2	BZP	100	1000
ZP0100100020		1 2/16	8/16	#2	white	100	1000